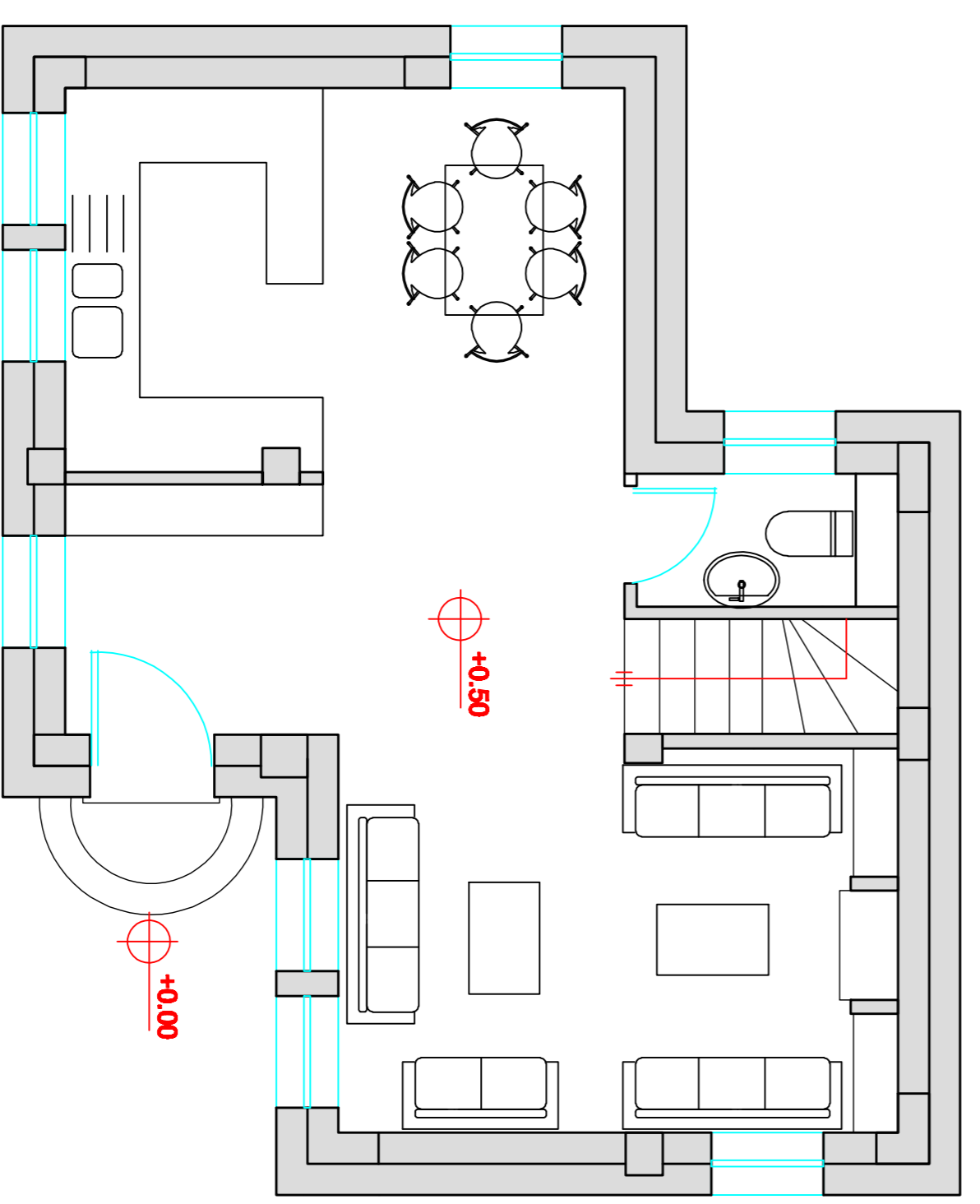
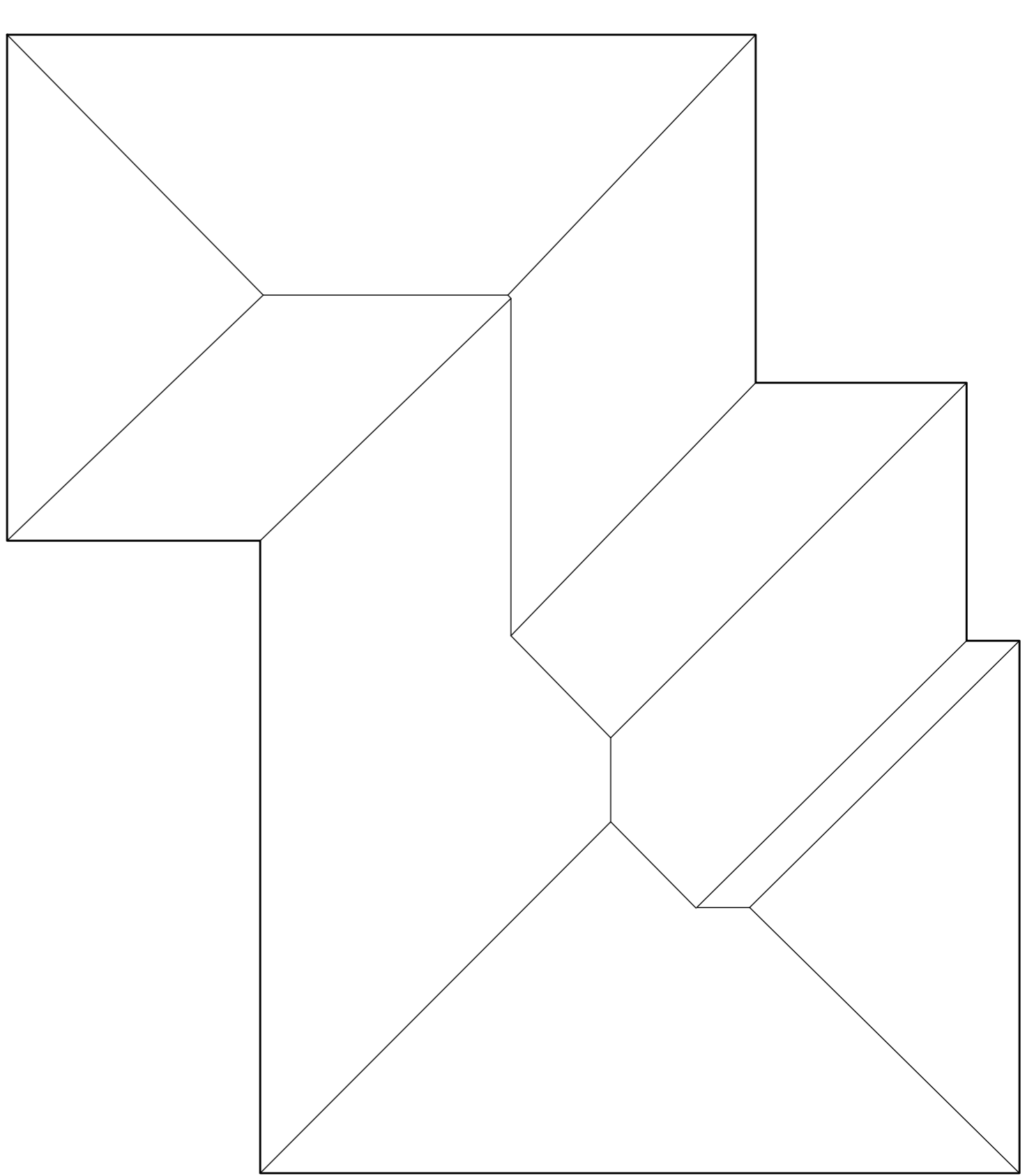


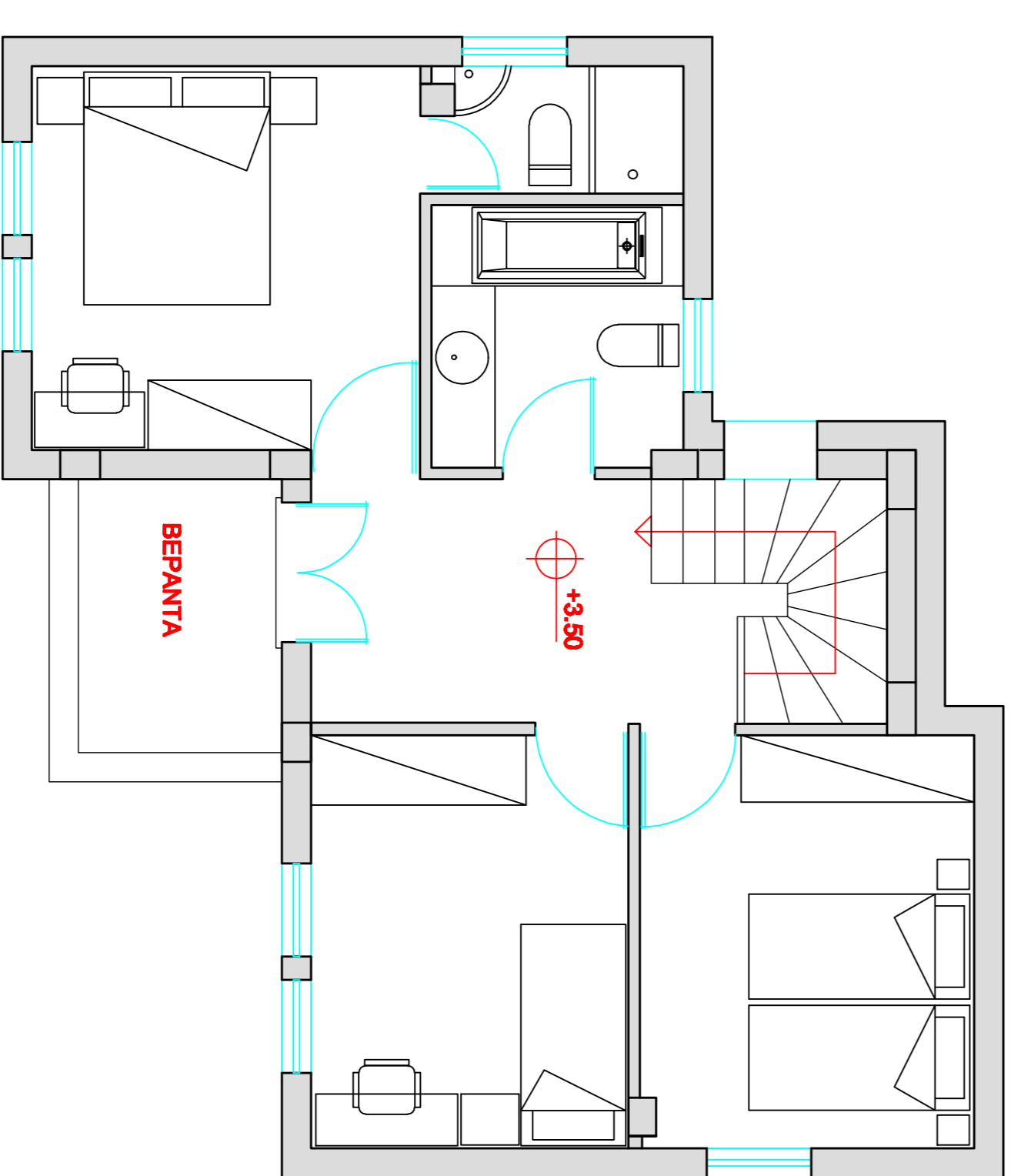
ΚΑΤΟΠΗ ΥΠΟΓΕΙΟΥ E=19,80Τ.Μ



ΚΑΤΟΠΗ ΙΣΟΓΕΙΟΥ E=58,50 Τ.Μ



ΚΑΤΟΠΗ ΣΤΕΓΗΣ



ΚΑΤΟΠΗ ΟΡΟΦΟΥ E=60,40 Τ.Μ