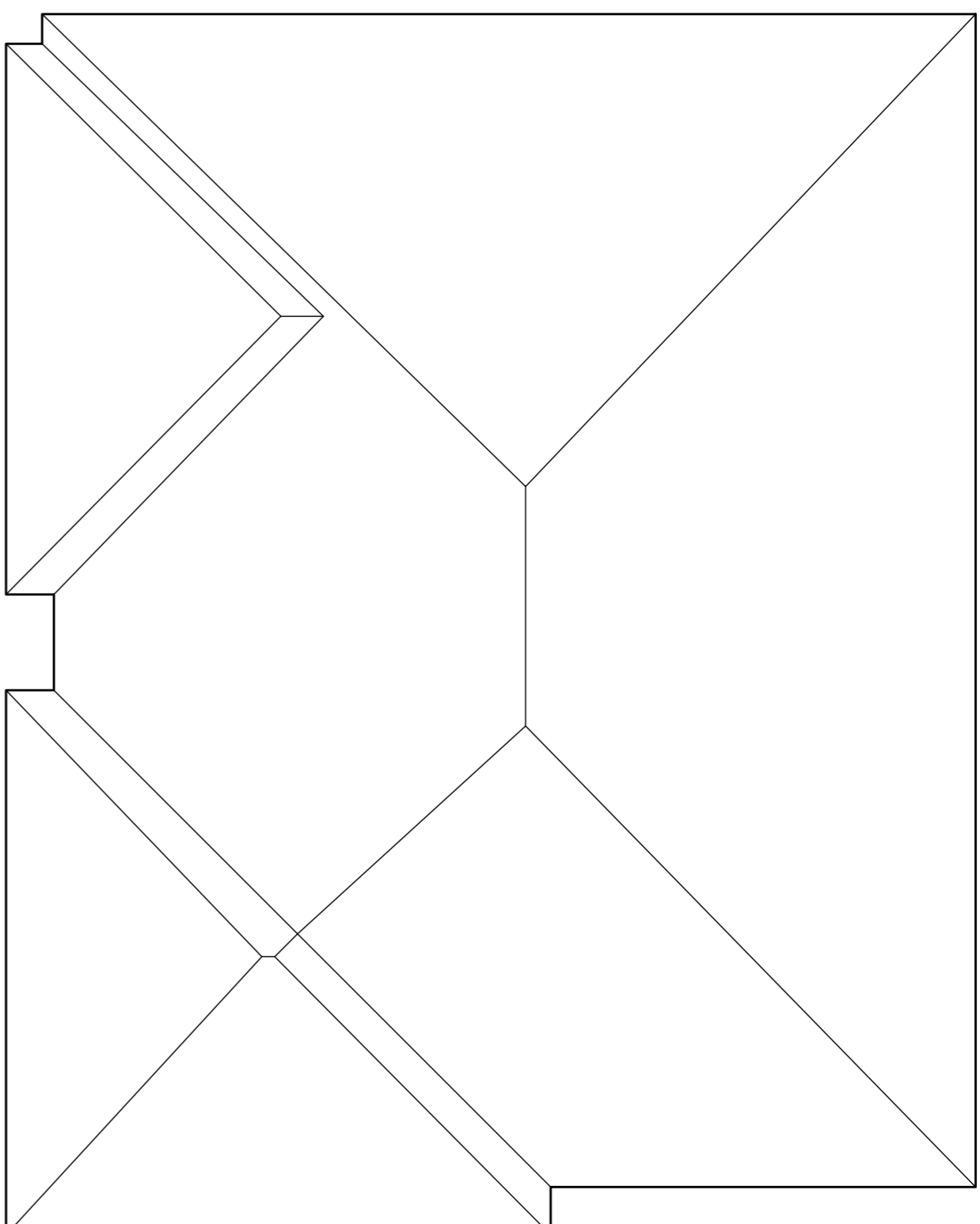
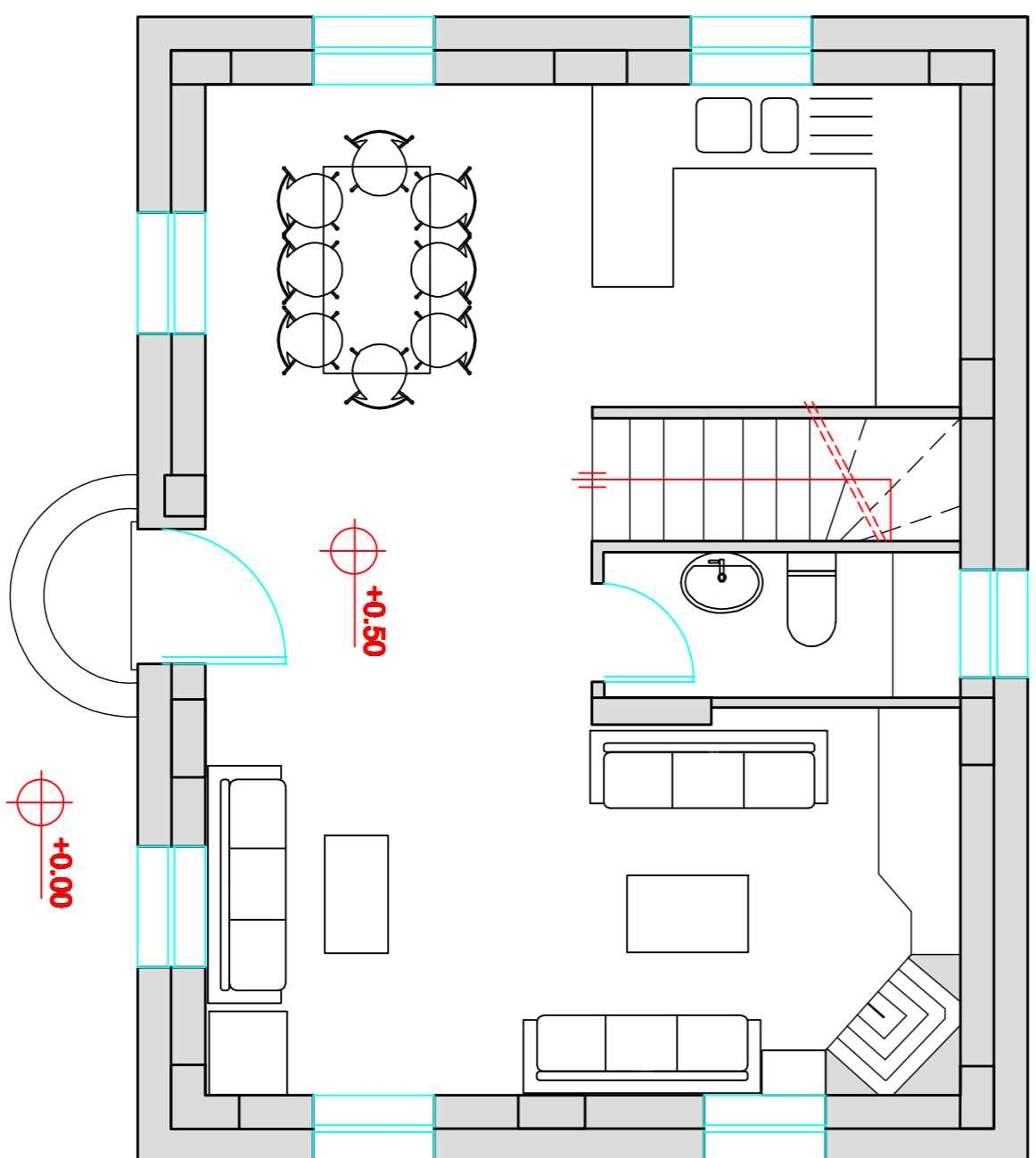


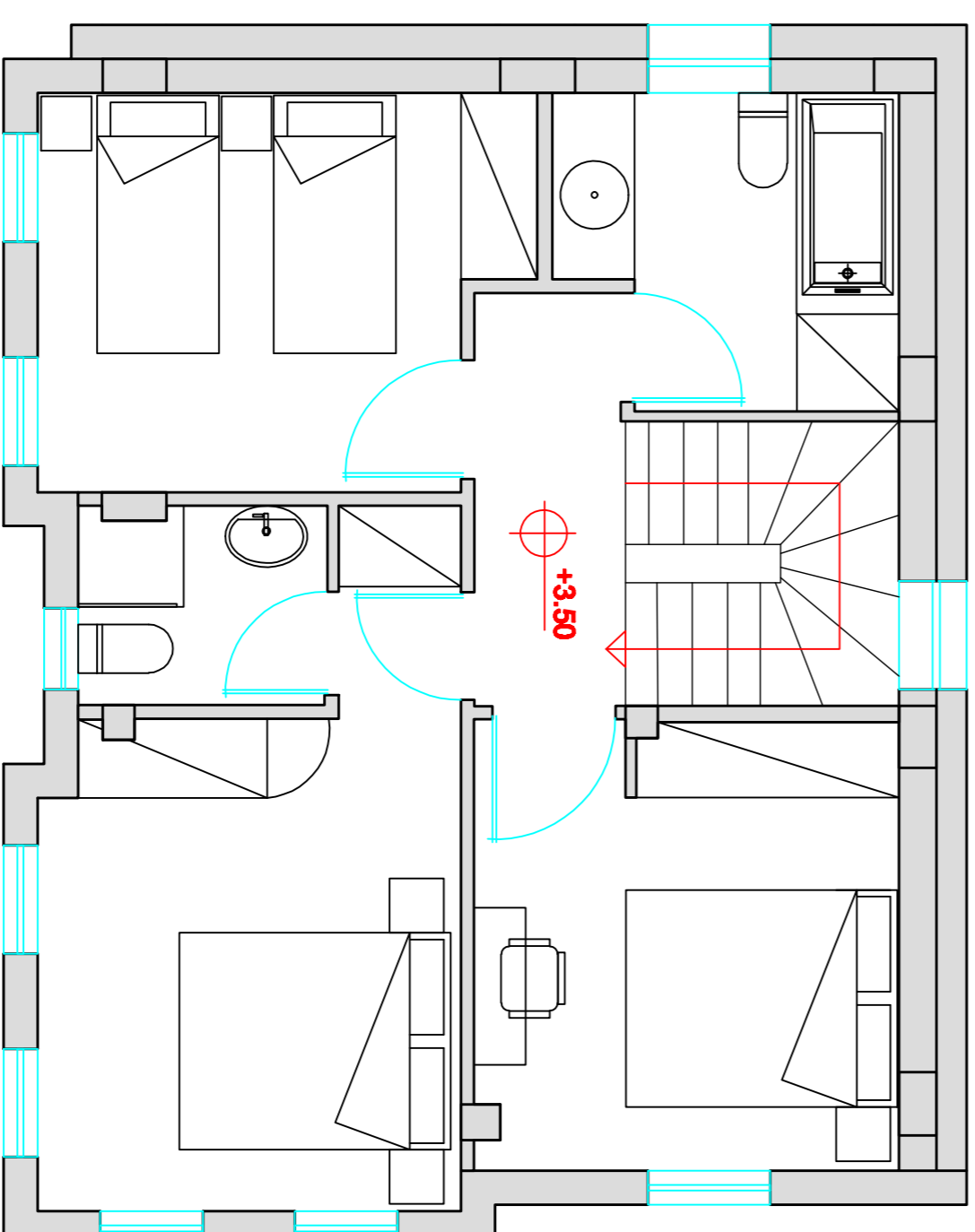
ΚΑΤΩΦΗ ΥΠΟΓΕΙΟΥ E=-19,80Τ.Μ



ΚΑΤΩΦΗ ΣΤΕΓΗΣ



ΚΑΤΩΦΗ ΙΣΟΓΕΙΟΥ E=56,10 Τ.Μ



ΚΑΤΩΦΗ ΟΡΟΦΟΥ E=62,20 Τ.Μ